

## SPECIAL ORDER ITEM



### EMPEROR DPM-8

The subwoofer as it is known today has been a rather disconcerting product for the high-end audio community. The very word conjures rather unpleasant thoughts of out of place boom that we audiophiles put up with in our video system. Well the controversy over what a subwoofer should do is over. Size is important so we are starting this series small in dimensions but wonderful as low frequency support for any audio-video system.

The new Emperor DPM 8 represents an audio technological tour de force for bass reproduction. It is a small .84 cu ft internal volume cube subwoofer that efficiently produces bass frequencies from below 20Hz to above 200Hz. The driver used is low mass aluminum operating in a balanced pressure environment with 5mm maximum required travel. It typically requires less than 10 w for the DPM-8 to support full range material operating at 90db room SPL.

While the EMP-8 may look somewhat familiar it is based on totally new subwoofer design principles. DPM (Direct Port Modulation) is the first departure from introducing the driver diaphragm energy directly into the enclosure volume. The DPM-8 puts the ports ahead of the box to not only eliminate boxy sound but also allow all bass frequencies to be output with equal efficiency and low distortion.



An internal manifold maintains the port first in the pressure sequence then allows the box to do its magic. An internal acoustic transmission line maintains the standing waves at the port throat. It is an acoustic engine, which incorporates clever turbo bass extension and capable of launching broadband output as stable standing waves. There is no static frequency dominating the enclosures internal pressure. The ports launch critically damped standing waves with the drivers' motion minimal throughout its bandwidth. The room is ignored as a source of signal modulation as the Acoustic Intake Regulator (AIR) isolates the driver. This serves to both isolate the room while dynamically adjusting the drivers' acoustic impedance to comply with its ambient environment.

The DPM-8 doesn't unload quickly in the infrasonic range and will load the room in this range when information is present making ambience an important contributor to realism when its there. (request graphs)

There are a few secrets here as well as patented generic acoustic processes that are now available in the Emperor DPM-8. The Emperor series of audiophile subwoofer promises to bring joy when you turn your system on and play your music or settle for something on the videophile side of your system. The DPM-8 really shows its capability reproducing effects naturally without boom (unless its in the source) at levels you will love.

Patents issued and pending

\*(DP8-P amplified version also available see info below)

Specifications: DPM-8

Alignment- Direct Port Modulation/w AIR (Driver- Aluminum 8" low mass)

Frequency response- 20/200 Hz (-9db/oct below 25Hz)

Impedance- 8 ohms nominal

Power Handling-250W program

Maximum SPL - 115db@36Hz (typical 90db room levels <10w required)

Sensitivity-87db @1w (35-200Hz) [25-200Hz with room gain]

Connection- Gold Plated 5-way binding posts- .75" spacing.

Dimensions-12.5"d x 12.5"w x 13.75"h)

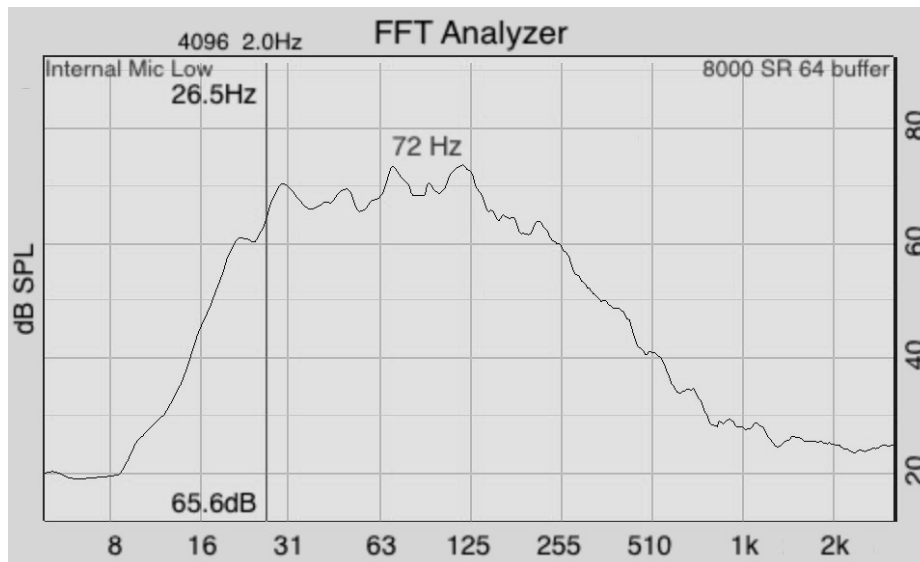
Included required spikes adds 1.75" to height

Weight- 25lbs (shipping wt-30lbs)

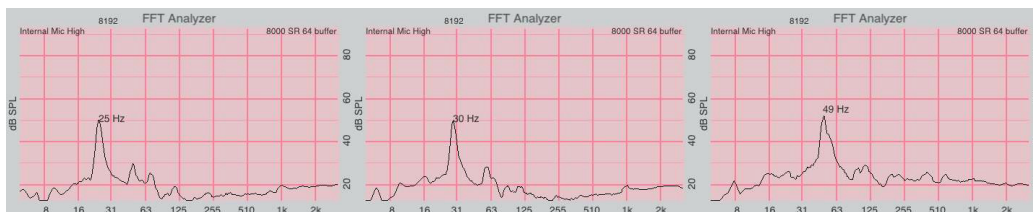
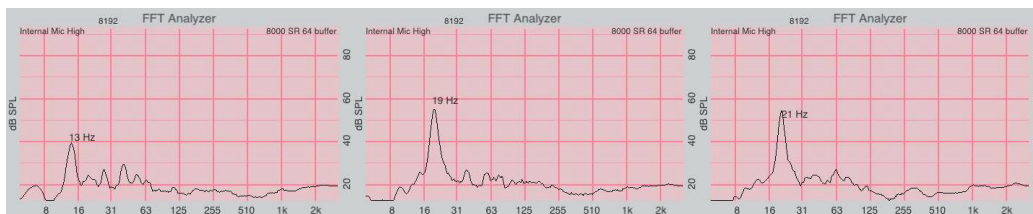


DPM-8 (top view)





DPM-8P PINK NOISE FREQUENCY RESPONSE CROSSOVER @ 200HZ  
(mic @ port without room gain)

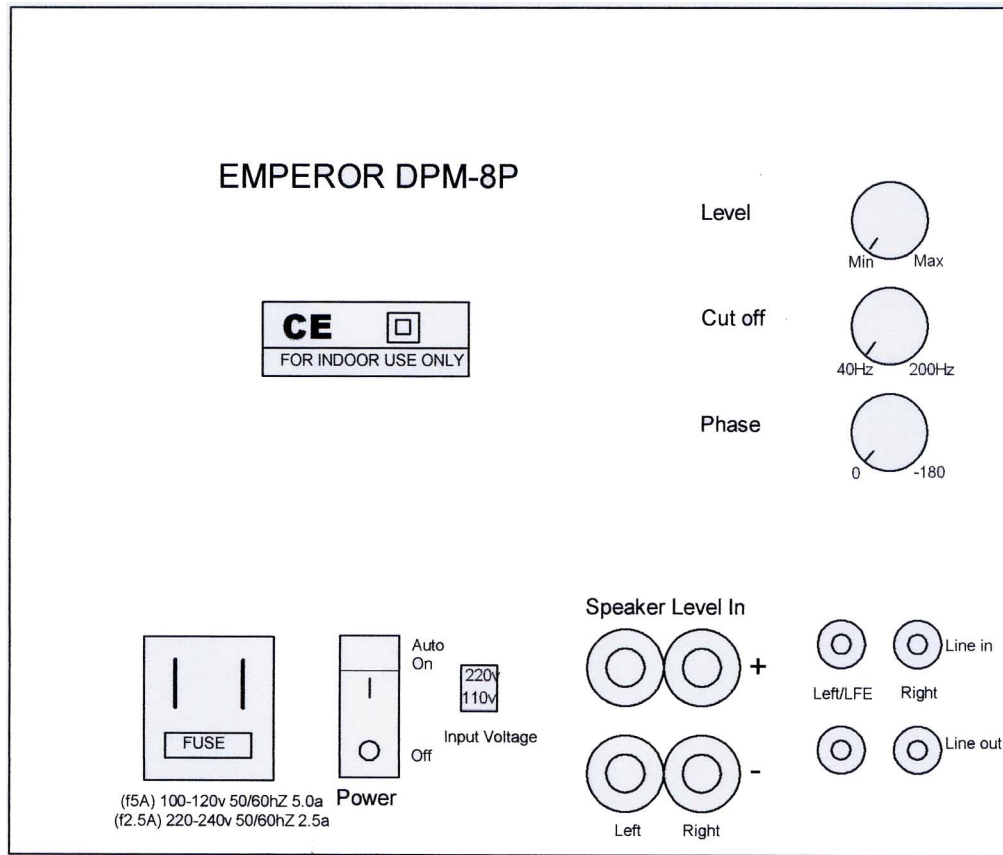


FREQUENCY RESPONSE DETAIL @ 1 WATT INPUT  
(with room gain)

Direct Port Modulation (DPM) allows for efficient reproduction of bass frequencies. The graphs above illustrate the ability of the DPM-8P to reproduce very low frequencies (13Hz to 49Hz with harmonic detail) with little power input. The graphs above are shown with 1-watt power input into the subwoofer and the microphone on the opposite side of the room. There is no equalization or electronic DSP required. Typically all subwoofers are quoted with high power requirements typical for a low sensitivity motor system. With very low driver mass and **DPM** in control the Emperor tracks bass detail with low distortion.



## EMPEROR DPM-8P AMPLIFIER PANEL



### SPECIFICATIONS DPM-8P

Amplifier Power Output- 250W class D into 8 ohm internal load (low heat dissipation)

THD - <1%

S/N Ratio @ rated Power >90db

Input Sensitivity (full power) 3V/50Hz @ High Level

Input Sensitivity (full power) 210mv @ Low Level

Variable Low Pass Frequency – 40Hz – 200Hz

Maximum Acoustic Output Level (typical 1m) 115db@32Hz

Variable Phase Control – 0—180 degrees

Operating Voltage – (1) 115Vac +/- 10% 5A max (2) 230Vac +/- 10% 2.5A max

LED operation indication- Red (standby) Green (operating)

Finish- Textured Black

Dimensions- 15”L x 12.5”W x 12.5”H (shipping dimensions 20” x 18” x 18”) DB

Weight-30lbs (shipping wt 35lbs)

DPM-8 \$1350.00 (DPM-8P \$1750.00)

